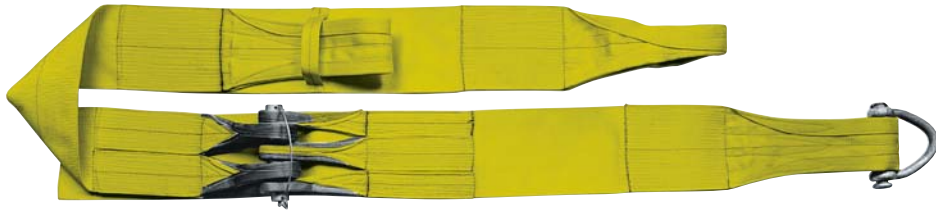


# Boat Lifting Slings



Stock no.	Width (in.)	Ply	Basket hitch
BLS-1-602	2	1	4,800
BLS-1-902	2	1	6,400
BLS-2-602	2	2	9,600
BLS-2-902	2	2	12,800
BLS-1-603	3	1	7,200
BLS-1-903	3	1	9,600
BLS-2-603	3	2	13,300
BLS-2-903	3	2	17,800
BLS-1-604	4	1	9,600
BLS-1-904	4	1	12,800
BLS-2-604	4	2	17,300
BLS-2-904	4	2	23,000
BLS-1-606	6	1	14,400
BLS-1-906	6	1	19,200
BLS-2-606	6	2	24,500
BLS-2-906	6	2	32,600
BLS-1-908	8	1	25,600
BLS-2-908	8	2	41,000
BLS-1-910	10	1	32,000
BLS-2-910	10	2	48,000
BLS-1-912	12	1	38,400
BLS-2-912	12	2	53,700

## High-capacity, labor-saving slings.

You can lift virtually any size boat with our Boat Lifting Slings, engineered to offer labor-saving convenience with all types of overhead lifting devices. Choose from one- or two-ply construction in webbing widths from

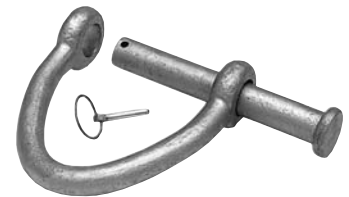
2" to 12" to give you rated capacities ranging from 4,800 lbs. to 53,800 lbs. per sling. When rigged in basket hitches, pairs of standard slings can lift up to 53 tons per pair. If you need even more capability than that, you may rig additional slings or pairs in your lift.

**Warning:** Horizontal sling angles less than 30° shall not be used.

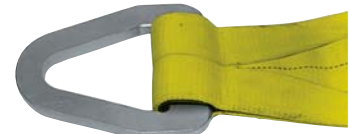


## Fittings and accessories for boat slings.

**Loose pin hardware** allows in-field removal for use on other slings or on additional eyes for different sized boats.



**Reusable alloy steel triangle** is a permanent end fitting that slides easily onto the lifting hook.



**Extra sewn eyes** allow lifting of different sized boats with one set of slings. Single-ply capacity only.



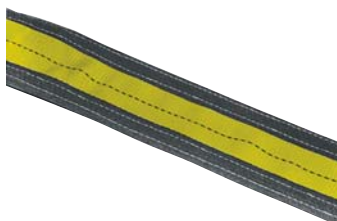
**Lead weights** help keep sling from twisting and also serve as anchor for sling in water. Can be sewn into keel pad. Fixed or sliding options.



**Disconnect** lets you remove sling from beneath the boat without removing sling eye from hook. Protective flap standard.



**Edge guard wear pads** can protect sling's edges and extend its useful life. Can be sewn on any portion of sling.



**Sliding chine and keel pads** permit positioning padding at any point to prevent rubbing on hull and protect sling from sharp corners.



NOTE: For loose-pin hardware (shackles) on 2-ply slings made with 8", 10" or 12" webbing, please check with your distributor, distribution center or factory.